

# HINO DAS TRANSMISSÕES

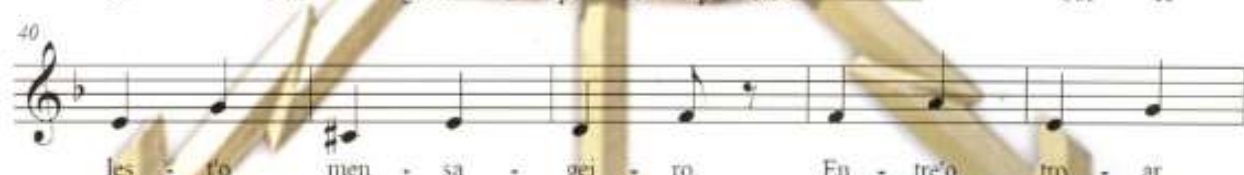
for Marching Band

Autor: Coronel Tm (Eng) Luis Miguel Alcide d'Oliveira  
[1990]

Orquestração: TCor CBMus Armandino Silva



CORO



# HINO DAS TRANSMISSÕES

for Marching Band

Autor: Coronel Tin (Eng) Luís Miguel Alcide d'Oliveira  
(1990)

Orquestração: TCor CBMus Armandino Silva

## Conductor Score

Marcial  $\text{♩} = 116$

The conductor score is written for a marching band and consists of 18 staves. The instruments are: Piccolo, Flutes, Oboe, Eb Clarinet, Clarinets 1, Clarinets 2, Clarinets 3, Bass Clarinet, Alto Saxophones 1-2, Tenor Saxophone, Baritone Saxophone, Flugelhorn, Trumpets 1-2, Trumpet 3, Horns 1, Horns 2-3, Trombones 1, Trombone 2-3, Baritone, Tuba, Snare Drum, and Bass Drum. The score is in 2/4 time with a tempo of 116 beats per minute. The key signature has one sharp (F#). The music is divided into two main sections by a double bar line. The first section starts with a dynamic of *f* (forte) and the second section starts with *mf* (mezzo-forte). The score includes various musical notations such as notes, rests, slurs, and dynamic markings.

This page of a musical score is arranged in a standard orchestral layout. The instruments are listed on the left side of the page, and their corresponding staves are on the right. The score is written in a key signature of one sharp (F#) and a common time signature (C). The instruments included are:

- Picc.
- Fls.
- Ob.
- B♭ Clt.
- Cl. 1
- Cl. 2
- Cl. 3
- B. Cl.
- A. Sax. 1-2
- T. Sax.
- B. Sax.
- Flg.
- Tpts. 1-2
- Tpt. 3
- Hns. 1
- Hns. 2-3
- Tbns. 1
- Tbn. 2-3
- Bar.
- Tb.
- S. Dr.
- B. Dr.

The score contains various musical notations, including notes, rests, slurs, and dynamic markings. There are several instances of triplets (marked with a '3') and some staves with a double slash (//) indicating a section that is not to be played. The page number '3' is centered at the bottom.

This page of a musical score contains the following parts and staves:

- Flc. (Flute)
- Fls. (Flute)
- Ob. (Oboe)
- Bl. Clt. (Bass Clarinet)
- Cl. 1 (Clarinet 1)
- Cl. 2 (Clarinet 2)
- Cl. 3 (Clarinet 3)
- B. Cl. (Bassoon)
- A. Sax 1-2 (Alto Saxophone 1-2)
- T. Sax. (Tenor Saxophone)
- B. Sax. (Baritone Saxophone)
- Flg. (Fagott)
- Tpts. 1-2 (Trumpets 1-2)
- Tpt. 3 (Trumpet 3)
- Hns. 1 (Horn 1)
- Hns. 2-3 (Horns 2-3)
- Tbns. 1 (Trombone 1)
- Tbn. 2-3 (Trombones 2-3)
- Bar. (Baritone)
- Tb. (Tuba)
- S. Dr. (Snare Drum)
- B. Dr. (Bass Drum)

The score includes various musical notations such as notes, rests, slurs, and articulation marks. The key signature is one sharp (F#), and the time signature is 4/4. The page number 21 is visible at the top left.

32

Picc. *ff*

Fls. *ff*

Ob. *ff*

E♭ Clt. *ff*

Cls. 1 *ff*

Cls. 2 *ff*

Cls. 3 *ff*

B. Cl. *ff*

A. Sax 1-2 *ff*

T. Sax. *ff*

B. Sax. *ff*

Fig. *ff*

Tpts 1-2 *ff*

Tpt. 3 *ff*

Hns. 1 *ff*

Hns. 2-3 *ff*

Tbns. 1 *ff*

Tbn. 2-3 *ff*

Bar. *ff*

Tb. *ff*

S. Dr. *ff*

B. Dr. *ff*

This page of a musical score, numbered 43 at the top left, is arranged in a standard orchestral format. The instruments are listed on the left side of the page, with their corresponding staves. The score is written in a key signature of one sharp (F#) and a common time signature (C). The instruments and their parts include:

- Picc.** (Piccolo): Treble clef, playing a melodic line with eighth and sixteenth notes.
- Fls.** (Flutes): Treble clef, playing a melodic line similar to the piccolo.
- Ob.** (Oboe): Treble clef, playing a melodic line similar to the flutes.
- B. Clt.** (Bass Clarinet): Treble clef, playing a melodic line.
- Cls. 1** (Clarinets 1): Treble clef, playing a melodic line.
- Cls. 2** (Clarinets 2): Treble clef, playing a melodic line.
- Cls. 3** (Clarinets 3): Treble clef, playing a harmonic accompaniment.
- B. Cl.** (Bass Clarinet): Treble clef, playing a melodic line.
- A. Sax 1-2** (Alto Saxophones 1-2): Treble clef, playing a melodic line.
- T. Sax.** (Tenor Saxophone): Treble clef, playing a melodic line.
- B. Sax.** (Bass Saxophone): Treble clef, playing a melodic line.
- Flg.** (Flugelhorn): Treble clef, playing a melodic line.
- Tpts. 1-2** (Trumpets 1-2): Treble clef, playing a harmonic accompaniment.
- Tpt. 3** (Trumpet 3): Treble clef, playing a harmonic accompaniment.
- Hrn. 1** (Horn 1): Treble clef, playing a melodic line.
- Hrn. 2-3** (Horns 2-3): Treble clef, playing a harmonic accompaniment.
- Tbrns. 1** (Trombone 1): Bass clef, playing a melodic line.
- Tbn. 2-3** (Trombones 2-3): Bass clef, playing a harmonic accompaniment.
- Bar.** (Baritone): Bass clef, playing a melodic line.
- Tb.** (Tuba): Bass clef, playing a melodic line.
- S. Dr.** (Snare Drum): Percussion, playing a rhythmic pattern.
- B. Dr.** (Bass Drum): Percussion, playing a rhythmic pattern.